

Teknatool International Limited
7D Dallan Place, Rosedale, Auckland, New Zealand
Tel: +64 09 477 5600 Fax: +64 477 5601

Email: service@teknatool.com
Website: www.teknatool.com



Frequently Asked Questions

Control Remote I

Date Raised: 7/June/2016

Date Amended:

Safe practises should always be employed to ensure the Health and Safety of yourself, employees and customers (if applicable) Refer to product manuals, exploded drawings and our website if further assistance is required, or contact us on service@teknatool.com

Checking your Model and Versions of your Lathe:

What Models can use the remote:

- Older NOVA DVR 2024 Lathes
 1. "Classic" 2024 Model - **Compatible with remote 1**
 2. "Rev01" 2024+ Model - **Compatible with remote 1**
 3. "Rev02/Rev03" 2024+ Models - **Not Compatible with remote 1**

Choke need putting on a 10 pin cable for 2024 lathes to prevent the remote from crashing the software

- NOVA DVR XP with the remote upgrade

- ✓ Look for this sticker on your NOVA DVR Lathe. If you have this sticker, you won't need the Retro Fit Kit, SKU 55519 - as your NOVA DVR is already equipped to receive the Wrist Remote. If this sticker is not on your lathe, you will need purchase the Retro Fit Kit to enable your DVR to 'talk' to your Wireless Wrist Remote.



What Versions on Old NOVA DVR 2024 can use the remote:

1. "Classic" 2024 Model - Compatible with remote 1

These were the first models, the hardware is the same as the XP with the remote attachment upgrade but has a different firmware compared to XP. Produced around 2011 to 2013.

Identified by:

- Older keypad
- ATMEL microprocessor
- Version number 8.18cs18 / 8.18cs22 (note: 8.18c refers to the main board version, s18/s22 refers to HMI version)



Figure 1 "Classic" 2024 Model part1/2



Figure 2 "Classic" 2024 Model part2/2

2. "Rev01" 2024+ Model - **Compatible with remote 1**

Produce 2013, approximately 100 produced

Identified by:

- Newer Keypad with F1 to F5 at top
- First use of STM32 microprocessor
- Version number 8.18ct**01** (note: 8.18c refers to the main board version, *t01* refers to HMI version)

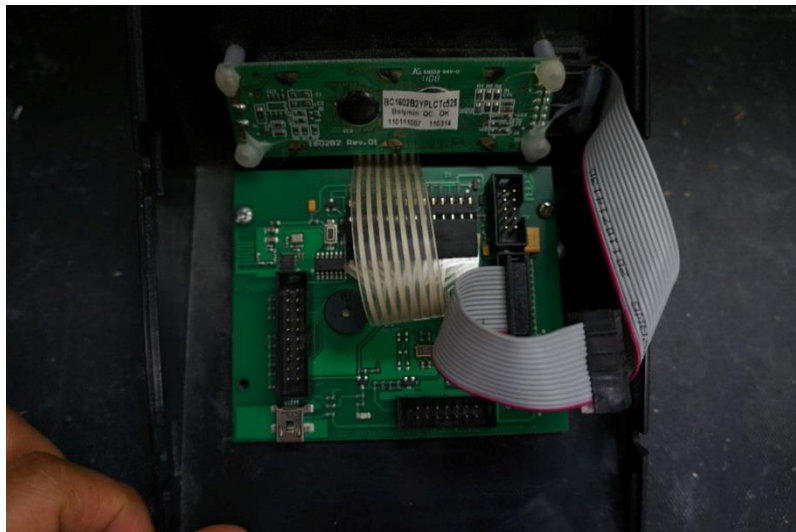


Figure 3 "Rev01" 2024+ Model part1/2

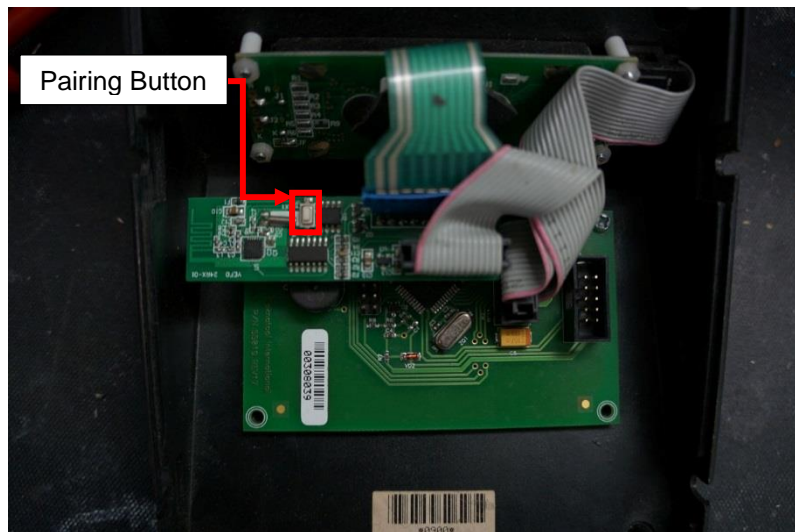


Figure 4 "Rev01" 2024+ Model part2/2

1. Installation instructions ("Classic" 2024 Model):

Version number 8.18cs**18** / 8.18cs**22** (note: 8.18c refers to the main board version, s18/s22 refers to HMI version)

1. Unpack the Remote from its packaging.
2. Turn the lathe power ON, because the pairing your lathe and remote need power.
3. Remove the control panel from the headstock by loosening or removing the 4 screws on either side of the control panel. Gently wiggle the Control panel from the head stock.



4. Push the Pairing button for 3 seconds.
5. Put back the Control Panel on the Headstock and screw in its four mounting screws (two on each side). Check that the control panel is secure and tighten mounting screws as necessary.

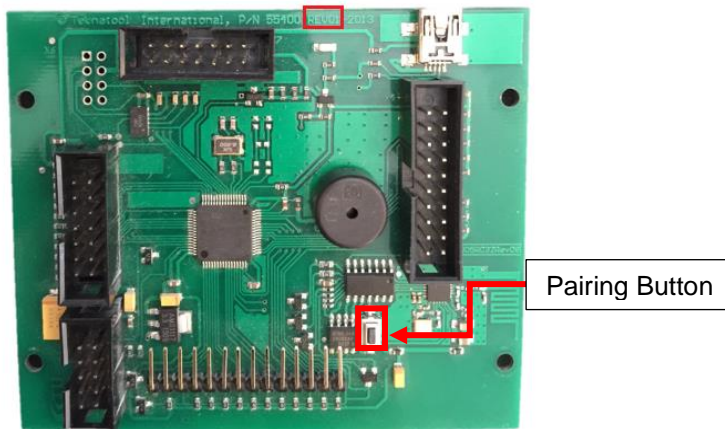
Your DVR and Remote should now be paired.

2. Installation instructions ("Rev01" 2024+ Model):

Version number 8.18ct**01** (note: 8.18c refers to the main board version, *t01* refers to HMI version)

1. Unpack the Remote from its packaging.
2. Turn the lathe power ON, because the pairing your lathe and remote need power.
3. Remove the control panel from the headstock by loosening or removing the 4 screws on either side of the control panel. Gently wiggle the Control panel from the head stock.

REV01= Version 1



4. Push the Pairing button for 3 seconds.
5. Put back the Control Panel on the Headstock and screw in its four mounting screws (two on each side). Check that the control panel is secure and tighten mounting screws as necessary.

Your DVR and Remote should now be paired.

3. Installation instructions ("NOVA DVR XP with the remote upgrade):

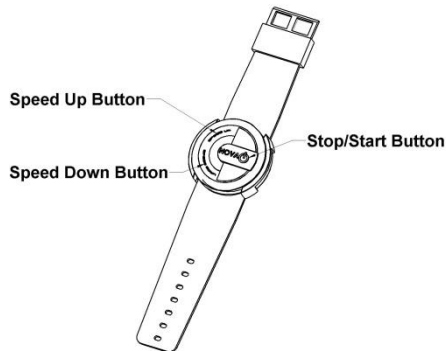
There is a video to shows how to fit the DVR Retro Fit Kit (55519) to your older NOVA DVR Lathe (pre-August 2011)

<https://www.youtube.com/watch?v=P8tkd7OjSgE>

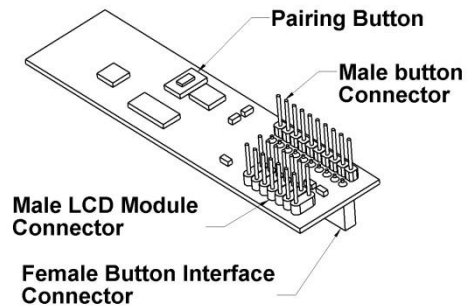
1. Unpack the Retro Kit Control Panel from its packaging and the Remote and its Receiver Module form its packaging.

NOTE: This Retro kit requires the DVR Wireless Remote Kit in order to work.

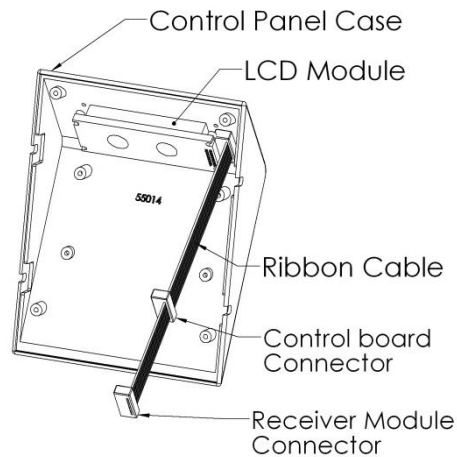
Remote:



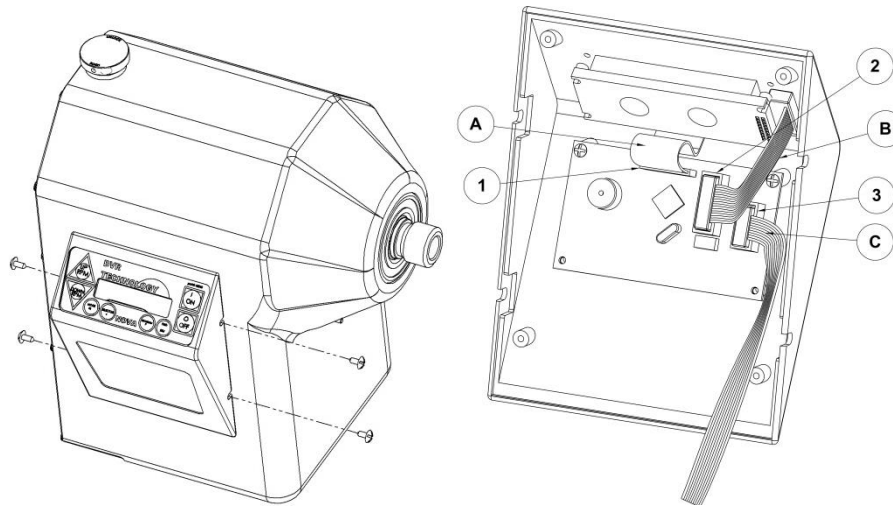
Receiver Module:



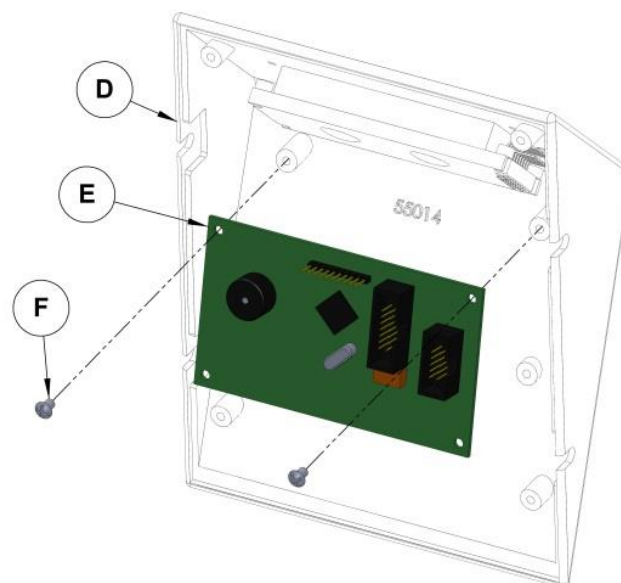
Control Panel:



1. Turn off the lathe, turn it off at its wall socket and unplug its power cord. Wait 2 minutes for the control circuitry to power down.
2. Remove the control panel from the headstock by loosening or removing the 4 screws on either side of the control panel. Gently wiggle the Control panel from the head stock.

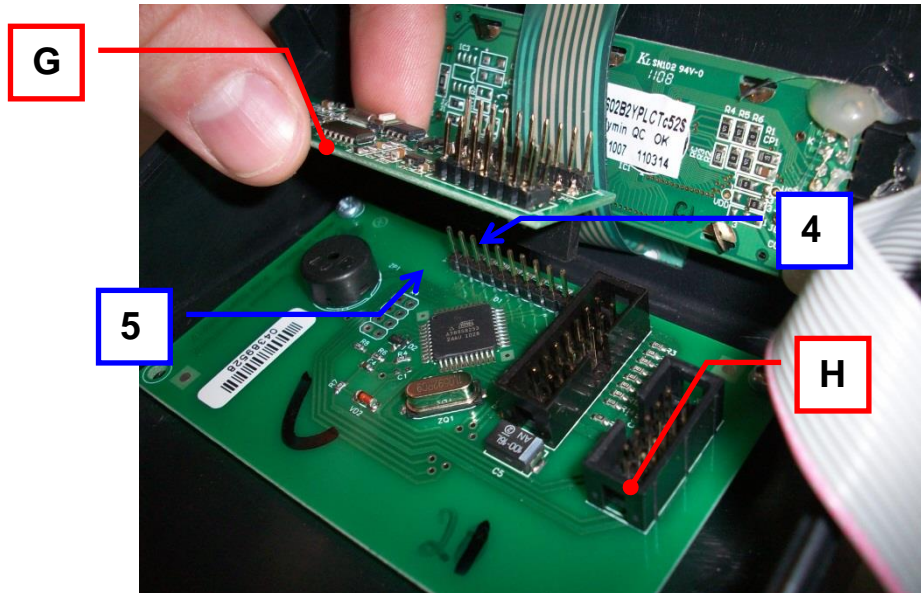


3. Disconnect (A) at (1).
4. Disconnect (B) at (2).
5. Disconnect the Motor Controller Cable (C) at (3).
6. Remove the Interface board (E) from the Control Panel Case (D) by removing the two screws (F) in the top corners of (E). Retain the screws for later use.
7. Get the Retro Kit Control Panel. Screw (E) with you just removed into the new Retro Kit Control Panel in the same manor as it was removed, using the same screws.

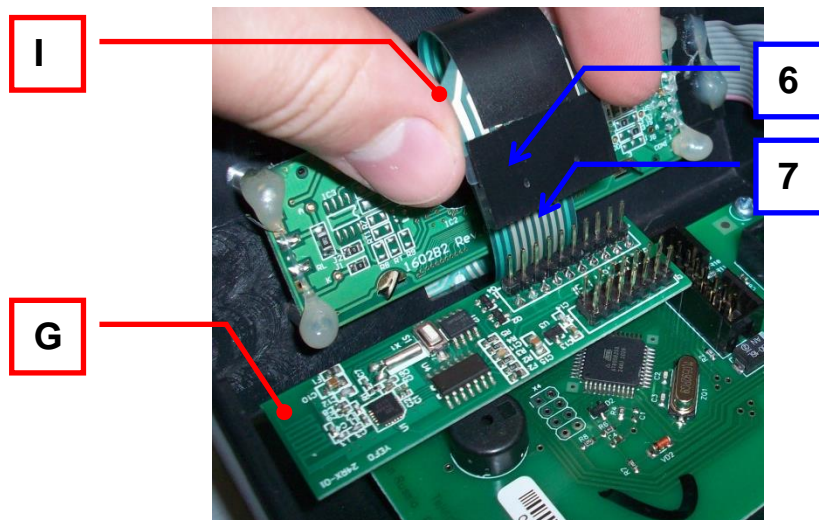


In the new Retro Kit Control Panel:

8. Plug (G) onto (H) by Connecting (4) and (5).

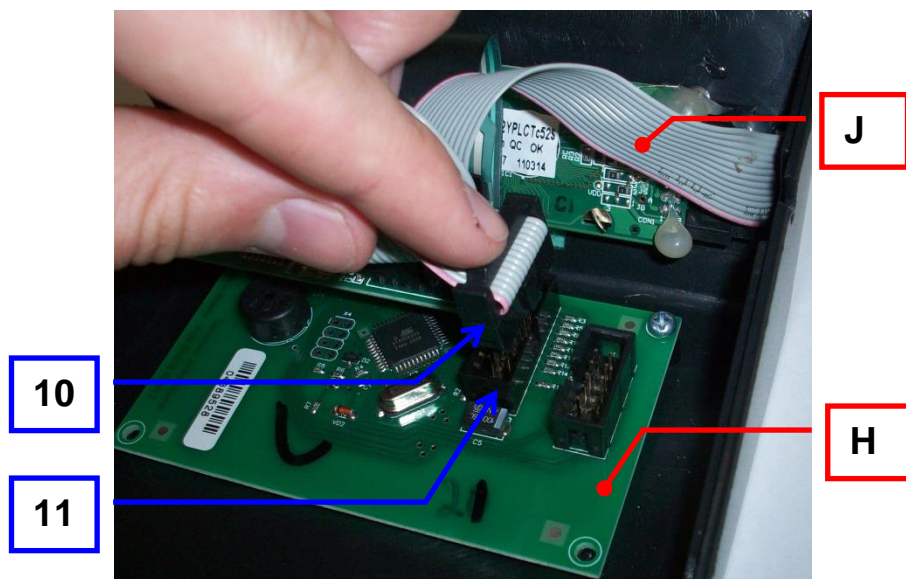
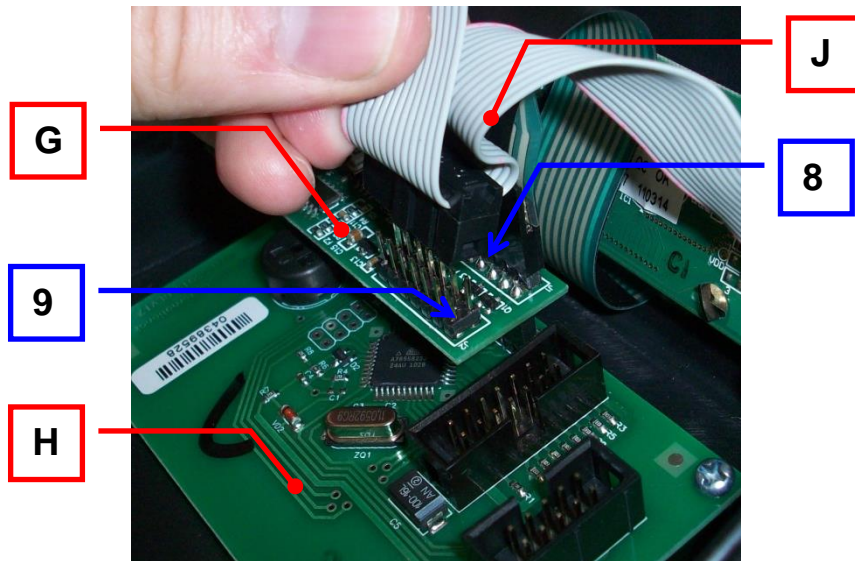


9. Plug Cable (I) into (J), by connecting (6) and (7).

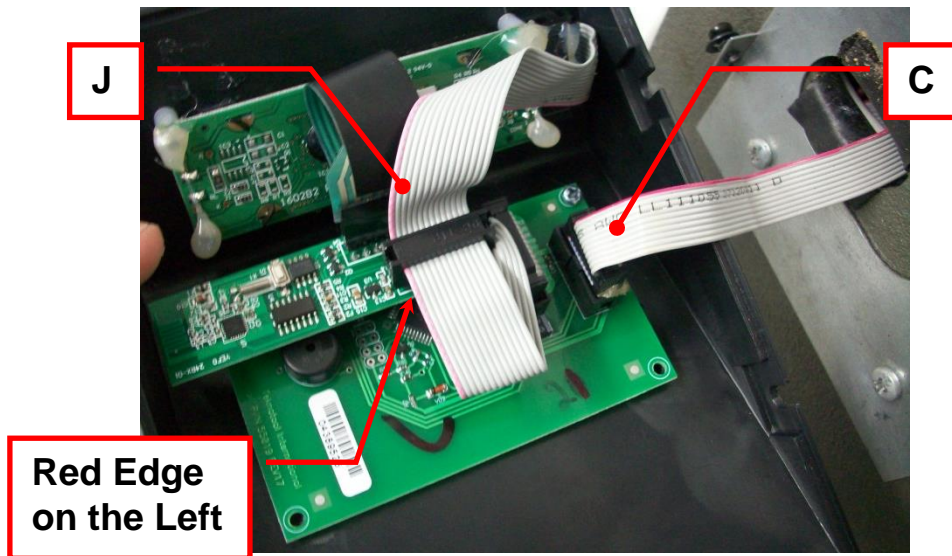


10. Plug cable (J) to both (G) and (H) by connecting (8) with (9) and (10) with (11).

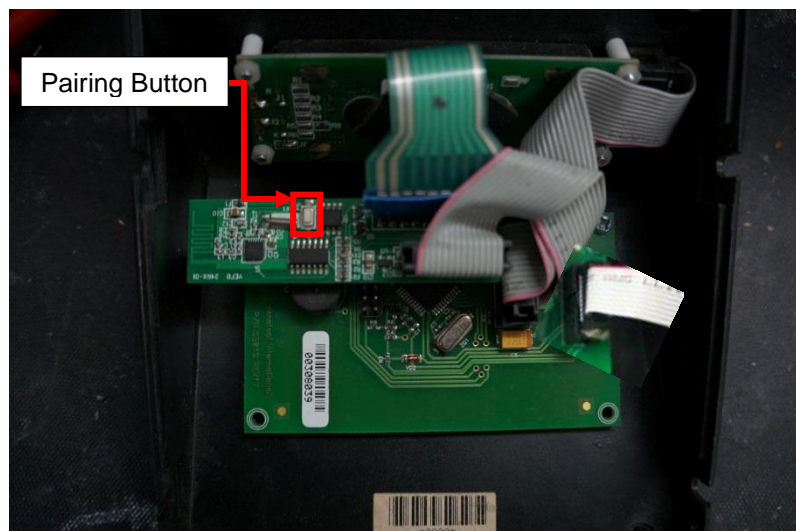
Note: Connector (8) must be orientated such that its ribbon cable's red edge facing the larger end of (G) (to the left).



11. Reconnect the Motor Controller Cable (**C**) and Check that all connectors are fully in and in the correct orientation as in the images below.



12. Turn the lathe power ON, because the pairing your lathe and remote need power.



13. Push the Pairing button for 3 seconds.
14. Replace the Control Panel on the Headstock and screw in its four mounting screws (two on each side). Check that the control panel is secure and tighten mounting screws as necessary.

Your DVR and Remoter should now be paired.

Battery Replacement:

If the battery fails, you can take the remote to a watch repair person to have the battery replaced. The remote will still be paired with or communicate with your NOVA DVR Lathe after battery replacement.

DVR Remote Pairing Instructions

In the event that a new remote or receiver is introduced. The two devices will need to be paired to each other. To do this follow these instructions:

1. Remove the control panel from the headstock by loosening or removing the 4 screws on either side of the control panel. Gently wiggle the Control panel from the head stock. Do not disconnect any of the cables.

For this step you will need to have the remote you wish to pair with the lathe readily available and have the lathe powered and on but not running.

2. On the Receiver Module there is a small 'Pairing Button' to the left of the connectors. Press the 'Pairing Button' once and then press the remote's 'Start/Stop Button' once within 60 seconds. The control panel should then restart.
3. Replace and screw in the 'Control Panel' on to the headstock. The lathe is now ready for use.

