

Teknatool International Limited

7D Dallan Place, Rosedale, Auckland, New Zealand

Tel: +64 09 477 5600 Fax: +64 477 5601

Email: service@teknatool.comWebsite: www.teknatool.com

Frequently Asked Questions

NOVA 1624-II Stud nuts loosening

Date Raised: 21 February 2017

Safe practices should always be employed to ensure the Health and Safety of yourself, employees and customers (if applicable) Refer to product manuals, exploded drawings and our website if further assistance is required, or contact us on service@teknatool.com

Date Amended

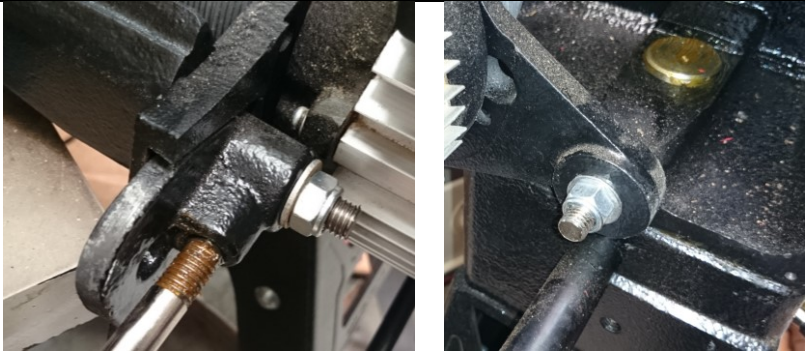
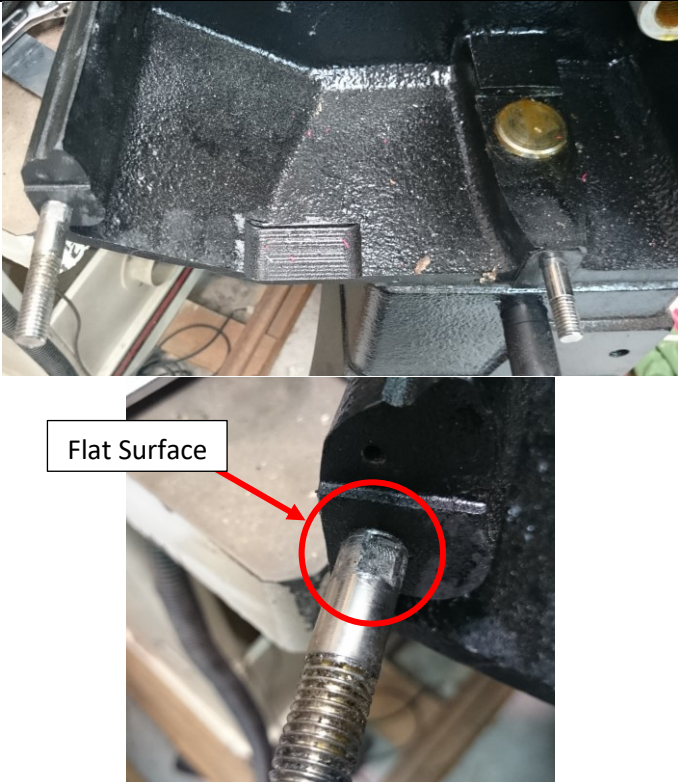
The nuts on the motor mount plate on the NOVA 1624-II lathe may become loose due to vibration of the machine. This issue often occurs due to insecure connection of the studs to the headstock.

To resolve this issue:

Tools Required:

1 x Adjustable spanner

Procedure:

Step No.	Description	Image
1.	<p>Remove both nuts shown in the image and wriggle it around with your hand while lifting the motor to see if they are loose.</p> <p>If either stud is loose and not firmly connected to the headstock, it needs to be tightened.</p>	
2.	<p>Remove both motor and T-bar cam to fully expose the studs.</p> <p>You will see that there is a flat surface on the studs to tighten it using the adjustable spanner.</p>	

- 3.** Tighten with the spanner.
Ensure that both studs are fully tightened.

Note:

No threads should be showing when the studs are fully tightened.

Threads showing

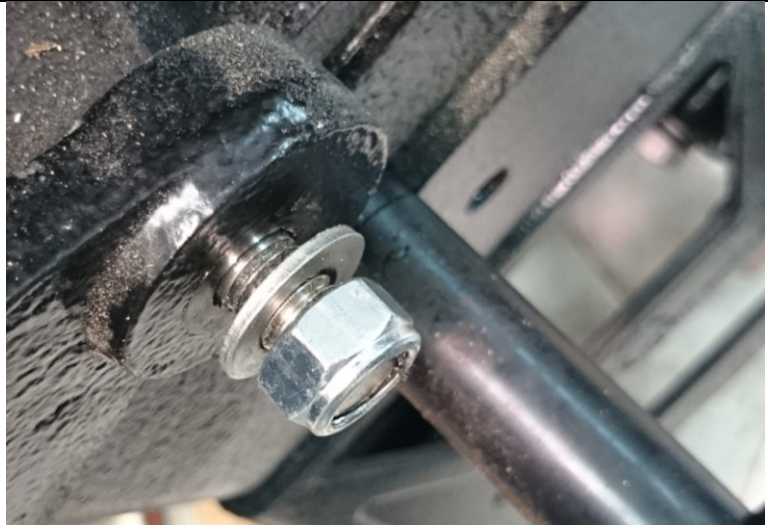


- 4.** Replace motor and cam back into place and secure it with the nut.

Tighten the nut to a point where the T-bar cam and motor mounting plate can be moved with ease.

Note:

Make sure to have the washer between the nut and the plate.



If the procedure above does not fully resolve the problem, the nuts on the studs may require replacement. The nuts which comes with the lathe are **M12 nylon nuts** and it can be replaced with **M12 self-locking nuts** for better resistance against vibration.



Left: Self-Locking Nuts

Right: Nylon Nuts