

**Teknatool International Limited**

7D Dallan Place, Rosedale, Auckland, New Zealand

Tel: +64 09 477 5600 Fax: +64 477 5601

Email: [service@teknatool.com](mailto:service@teknatool.com)Website: [www.teknatool.com](http://www.teknatool.com)

## Frequently Asked Questions

### How to replace the Motor Pulley when upgrading to a DVR on NOVA 1624-II

Date Raised: 27 February 2017

Safe practices should always be employed to ensure the Health and Safety of yourself, employees and customers (if applicable) Refer to product manuals, exploded drawings and our website if further assistance is required, or contact us on [service@teknatool.com](mailto:service@teknatool.com)

Date Amended

The pulley on the motor spindle needs to be removed when upgrading with the new DVR upgrade package. This motor pulley can be removed and attached easily to the new DVR motor but may require some force.

**Tools Required:**

1 x 4mm Allen Wrench

1 x Philips Screwdriver

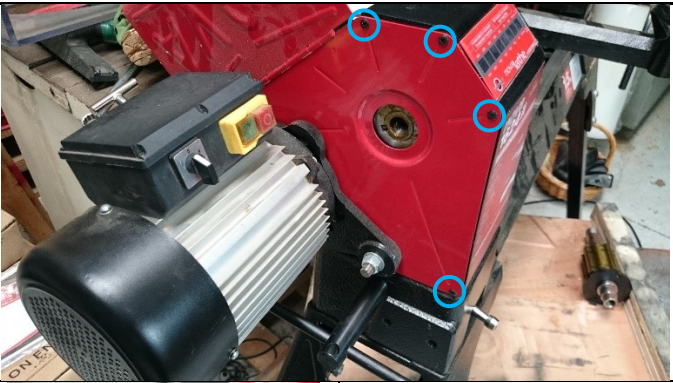


1 x Adjustable Spanner

1 x Crowbar

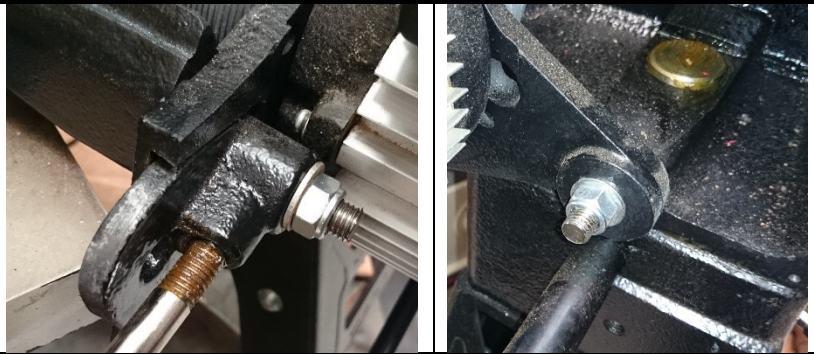
1 x Cushioning material (Piece of timber)

1 x Mallet

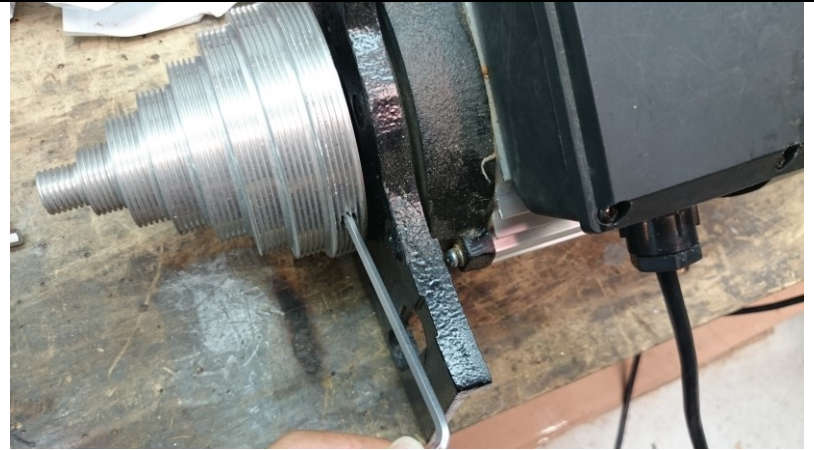
**Procedure:**

Step No.	Description	Image
1.	<p>Remove the headstock guard by unscrewing 6 Philips screws shown in the image.</p> <p><b>Note:</b></p> <p><b>To access screw on figure 1:</b> Pull out the T-bar and turn it to the lowest position.</p> <p><b>To access screw on figure 2:</b> Lift the motor up by using the T-bar and lift it to the highest position.</p> <p>Remove the headstock guard</p>	   <p>Figure 1: Screw behind T-bar</p> <p>Figure 2: Screw behind motor</p>

2. Unscrew the 2 nuts that are holding the motor mount plate to the headstock. The motor can be pulled off the studs along with the T-bar handle.



3. Remove the grub screw securing the pulley in place with a 4mm Allen Wrench.



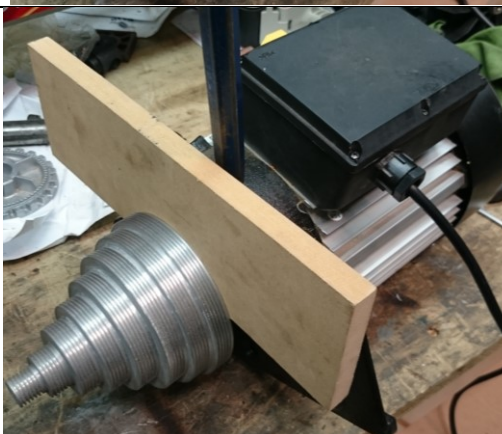
4. Use leverage to push out the pulley. In the image, a crowbar has been used.

**Note:**

Always add cushioning's between the pulley and tool which provides leverage to prevent damage to the pulley. Use a piece of timber in between when the gap between pulley and motor mount plate increases.

**Tip:**

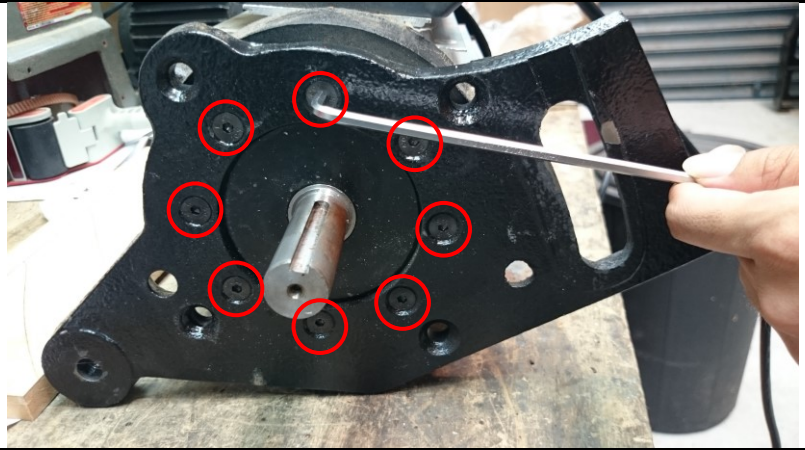
Rotate the pulley around, applying even pressure on the pulley to prevent deformation.





5. Remove the motor mount plate by unscrewing the screws shown in the image using the 4mm Allen wrench.

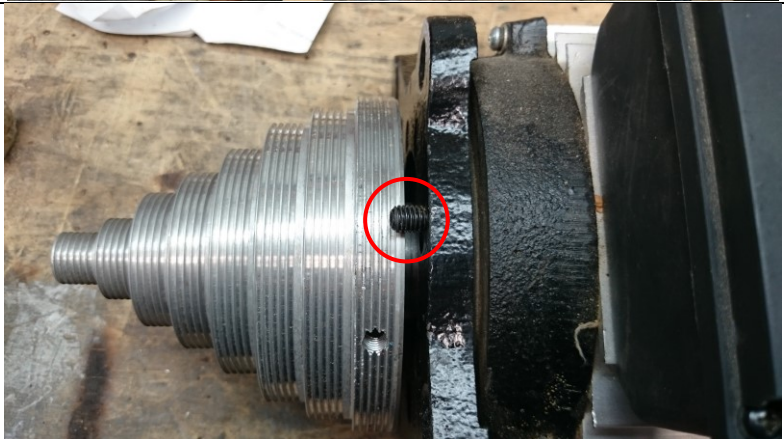
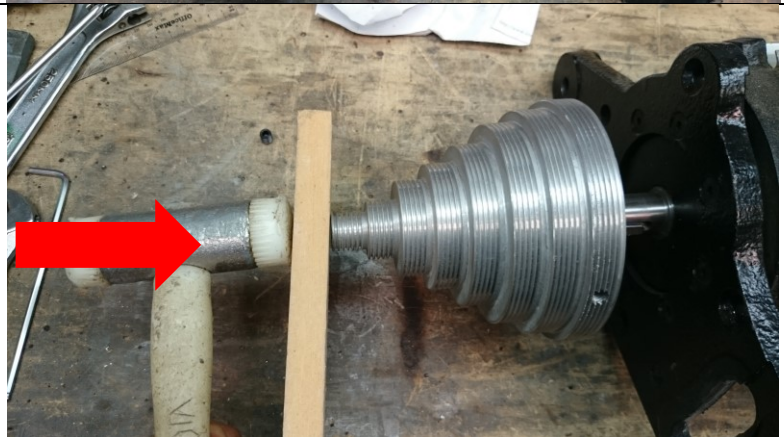
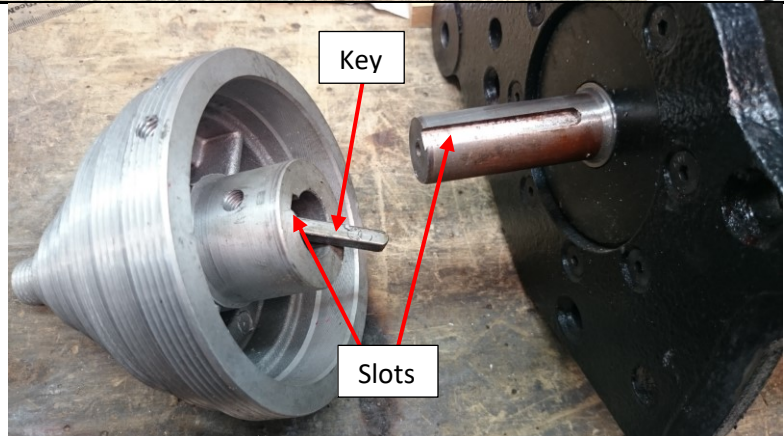
Attach the motor mount plate to the new DVR motor.



6. To reattach the pulley onto the new motor shaft, slide the key into the slots of both shaft and pulley. The spindle will slide on, use a piece of timber and mallet to tap it back in to position.

**Note:**

The correct distance between the pulley and the motor mount plate should be less than the length of the grub screw removed from step 3 (shown in third image)



7. Secure the pulley into position with the grub screw to finish mounting the pulley onto the new DVR motor (reverse of step 3).

Mount the motor back onto the headstock to finish.