

Teknatool International Limited

7D Dallan Place, Rosedale, Auckland, New Zealand

Tel: +64 09 477 5600 Fax: +64 477 5601

Email: service@teknatool.comWebsite: www.teknatool.com

Frequently Asked Questions

NOVA DVR XP Lathe tool rest not locking

Date Raised: 11 April 2017

Safe practices should always be employed to ensure the Health and Safety of yourself, employees and customers (if applicable) Refer to product manuals, exploded drawings and our website if further assistance is required, or contact us on service@teknatool.com

Date Amended

If you find the tool rest on your DVR XP lathe becoming loose during use, some nuts and bolts require tightening. First screw which should be tightened is the **M12 countersunk screw (38)** shown in figure 1.

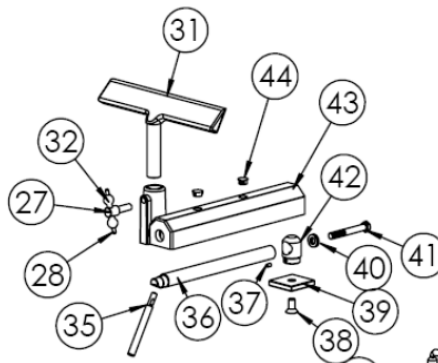


Figure 1: Partial Exploded View of Tool rest

If tightening the countersunk screws do not resolve the issue, then the set screw (37) has to be tightened.

Tools Required:

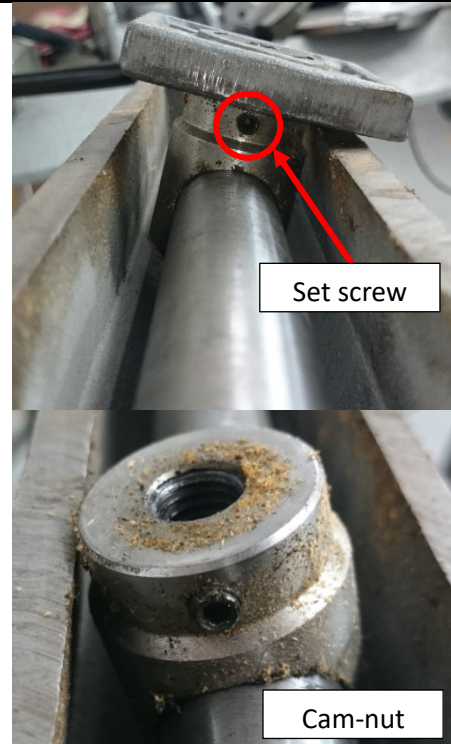
1 x 3mm Allen Wrench

1 x 8mm Allen Wrench

To resolve the issue of the tool rest not fully locking into place:

Step No.	Description	Image
1.	<p>Remove the tailstock and slide the tool rest out of the bed from the side to gain access to the M12 countersink screw on the bottom.</p> <p>Note: Do not remove the M12 countersink screw at this step</p>	
2.	<p>Once the tool rest is removed from the lathe bed, turn it upside down to gain access to the set screw on the side.</p> <p>Remove/ loosen this set screw in order to rotate the M12 countersink screw.</p> <p>Note: If the M12 countersink screw is turned before the removal of this set screw, there is a risk of stripping the thread on the M12 countersink screw.</p>	

If necessary, take off the tool rest lock plate and clean out the inside of the cam-nut which may be contaminated via foreign material.



3.

Replace the tool rest lock plate if you have taken it off.

Tighten the M12 countersink screw until tight.

Replace the set screw.

Slide the tool rest and tailstock back into the lathe bed.

Note:

If you find difficulties replacing the tool rest back into the bed, try rotating the handle around to loosen the tool rest lock plate.

Make sure the lock plate slides into the lathe bed on the orientation shown on the image (raised parts parallel with the bed)



If you are to find any defect on the cam system at on the tool rest, please contact our services for an arrangement to replace the parts.