

Teknatool International Limited

7D Dallan Place, Rosedale, Auckland, New Zealand
Tel: +64 09 477 5600
Fax: +64 477 5601

Email: service@teknatool.com
Website: www.teknatool.com



Frequently Asked Questions

Date Raised: 21 April 2021

Date Amended:

Safe practices should always be employed to ensure the Health and Safety of yourself, employees and customers (if applicable) Refer to product manuals, exploded drawings and our website if further assistance is required, or contact us on service@teknatool.com

Replacing the main control board in the Nova Viking Drill Press

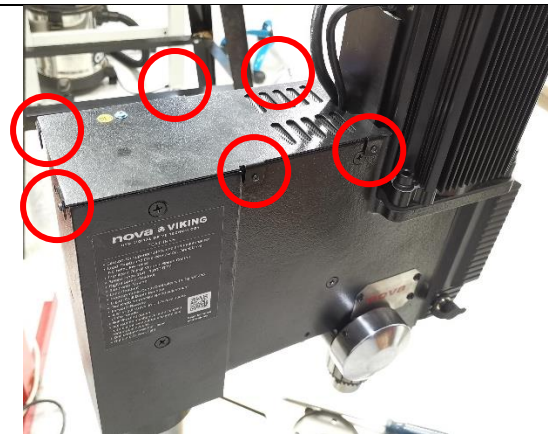
Tools:

- Phillips Screw Driver
- Cutting tool
- Pair of long nose pliers

1	For your safety, ensure the power is turned off and unplug the Drill Press
---	--

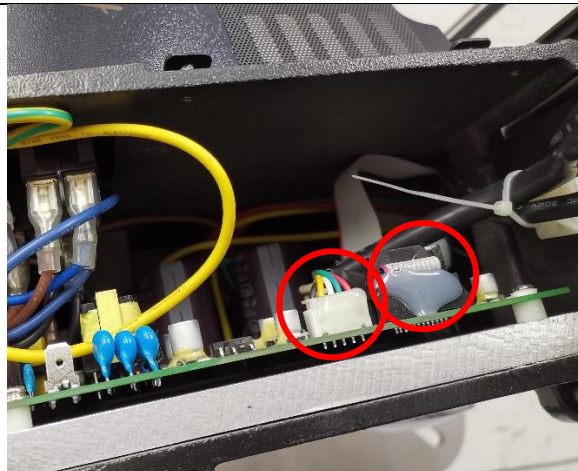
2	To begin replacing the main board, remove the 6 screws on the top plate cover of the Viking drill press.
---	--

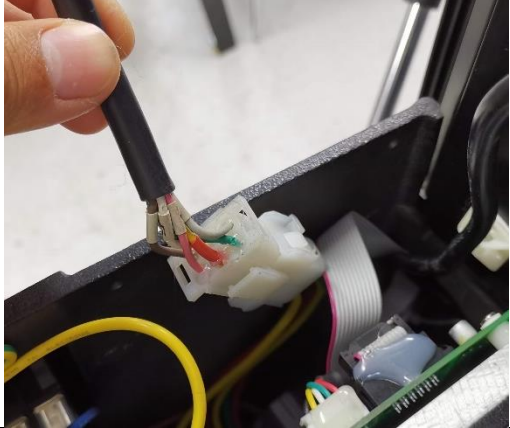


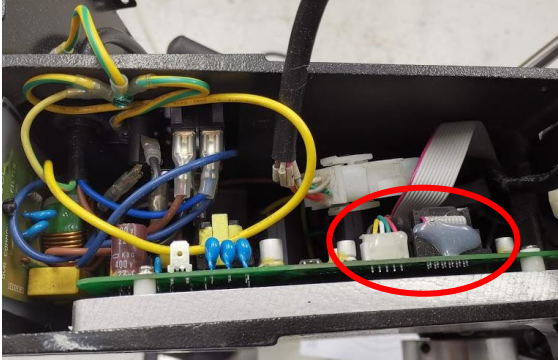
Move the top plate out of the way to expose the main control board.



3	Use a pair of pliers or cutters to remove the hot glue on the 5 pin sensor cable and the 12 pin communication cable.
---	--

Disconnect these two cables.



4	<p>Cut the cable tie which ties the main power cable and sensor cable from the motor to the main board.</p> <p>Pull out the motor power cable from the headstock and disconnect the cable.</p>	
5	<p>Remove the 4 large Philips screws on the left hand of the headstock. The main control board can now be carefully removed.</p> <p>Note: The main control board may be adhered to the headstock due to the white thermal compound. You can use one of the 4 Philips screws to screw in 1 revolution and push into the board and lift the board away from the headstock.</p>	
6	<p>Once the old board has been removed, disconnect the 2 power leads which run into the board.</p>	
7	<p>To install the new board into the machine, first connect the 2 main power leads into the 2 spade connectors on the board. (The color for the wires do not need to match)</p> <p>Connect the 6 pin motor cable together and lower the main board back into the headstock.</p>	

	Please note the orientation of the board must match with the sensor and communication connectors on top.	
8	<p>Line up the screw holes and screw in the 4 screws into the headstock.</p> <p>Plug in the 5 pin sensor cable and 12 pin communication cable into the main board.</p> <p>Optional: Use a new cable tie to tie the two cables coming out from the motor to the adhesive mount.</p>	
9	Replace the top cover and fasten the screws back into place	