

Teknatool International Limited

7D Dallan Place, Rosedale, Auckland, New Zealand

Tel: +64 09 477 5600

Fax: +64 477 5601

Email: service@teknatool.com

Website: www.teknatool.com



Frequently Asked Questions

Date Raised: 29 Apr 2022

Date Amended:

Safe practices should always be employed to ensure the Health and Safety of yourself, employees and customers (if applicable) Refer to product manuals, exploded drawings and our website if further assistance is required, or contact us on service@teknatool.com

Replacing the keypad on the Nova Saturn Lathe

Tools Required:

- Phillips head screw driver

- | | |
|---|--|
| 1 | Important: Unplug the lathe from the power socket, turn the power switch off, and wait for two minutes for the capacitors to drain. |
|---|--|

Checking the HMI Panel:

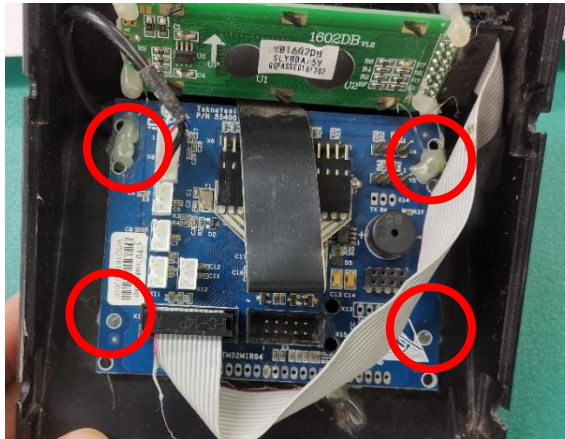
- | | |
|---|--|
| 2 | Loosen the four screws holding the HMI panel onto the headstock. |
|---|--|

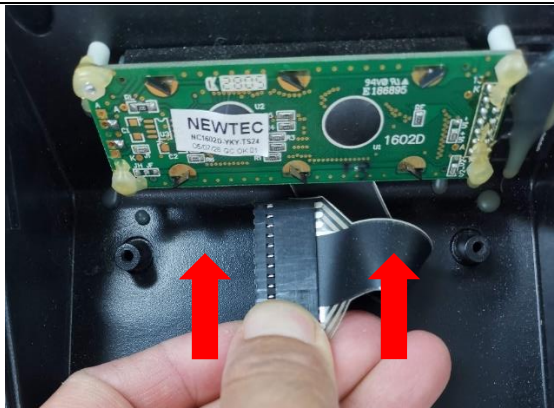



- | | |
|---|--|
| 3 | Unplug the external stop and the 10 pin ribbon cable from the headstock. |
|---|--|

Remove the front panel

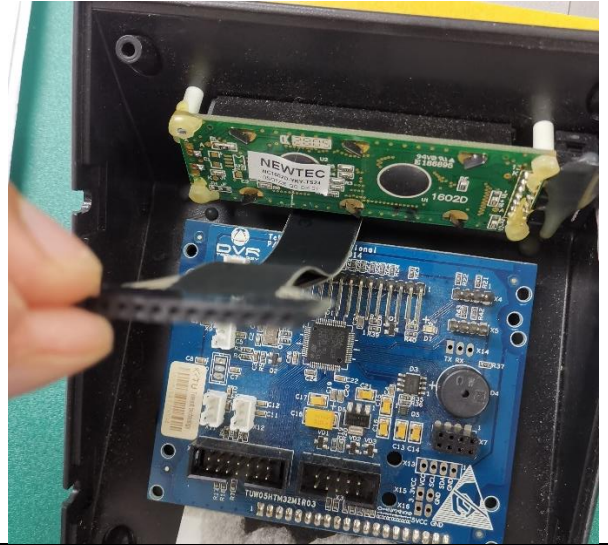


4	<p>Undo the 4 screws and remove the circuit board.</p> <p>Remove any hot glue around the screws as necessary</p>	
---	--	--

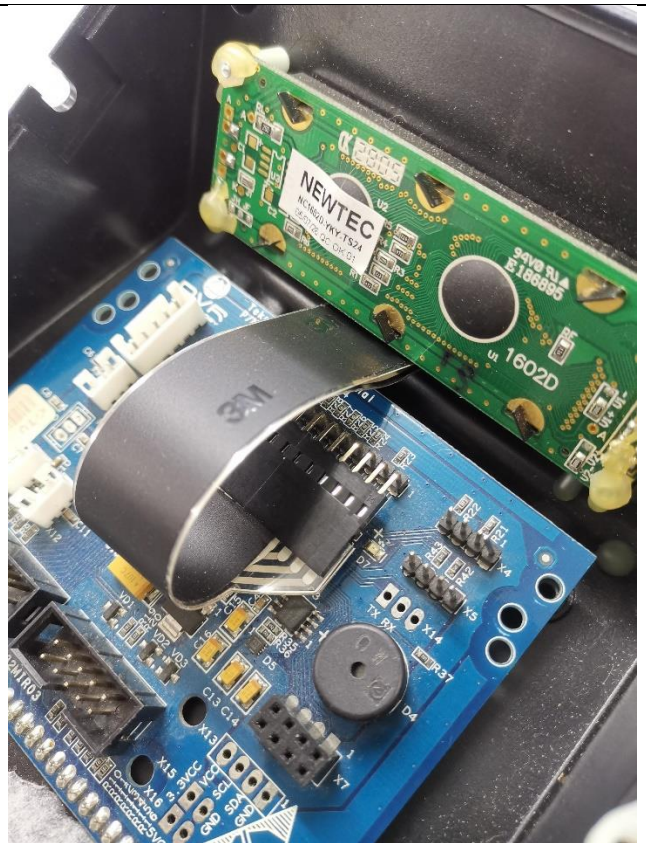
5	<p>From the front, unpeel the adhesive keypad.</p> <p>Unplug the keypad (long flat cable) from the circuit board and twist the connector 90 degrees.</p> <p>Push the connector out of the slot on the front panel and remove any old adhesive.</p>	
---	--	---

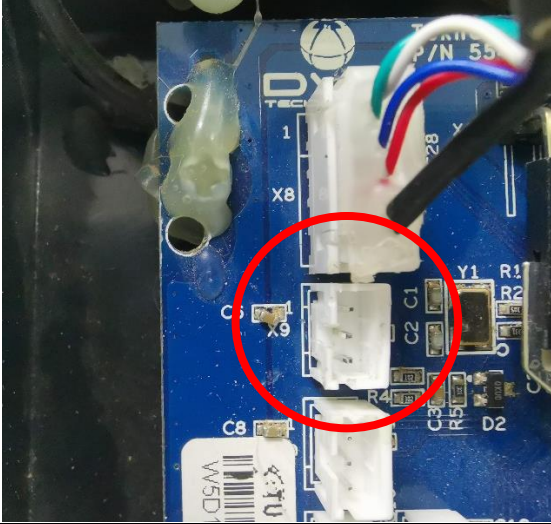
6	<p>Insert the new keypad by twisting the connector in the same way.</p> <p>NOTE: the printed keypad layer should be facing up and there should be no twist in the flat wire.</p> <p>Peel off the yellow adhesive layer and stick the new keypad onto the plastic panel.</p>	
---	---	--

- 7 Place the circuit board back into the panel. Make sure the keypad cable is between the screen and the blue board (as shown)



- 8 Flip the flat keypad cable and plug the cable into the circuit board as shown.
- Replace the screws for the circuit board to secure the board.



10	<p>Plug all the remaining wires back into the circuit board.</p> <p>NOTE: the external Stop button plugs into the X9 connector shown.</p>	
11	<p>Put the front panel back onto the headstock and secure the 4 screws on the side.</p> <p>The keypad is now replaced.</p>	